

AUGUST TO SEPTEMBER 2024 PĀNUI

# NGĀTI RUAPANI MAI WAIKAREMOANA

## E ngā uri o Waikaremoana, tēnā koutou katoa ...

I am pleased to share an update on the latest progress with our settlement. Our draft settlement bill is currently in the pipeline, and it's an important milestone for our collective. As we continue to push forward, we acknowledge our whakapapa and the histories that have shaped us as uri of Waikaremoana. We are proud of who we are and the journey we are on together.

We've been strengthening our relationships with several ministries to ensure they align with our vision for Waikaremoana. This includes collaborations with the Ministry for Culture and Heritage, Housing and Urban Development, and Land Information New Zealand. We're also focused on returning key conservation properties through ongoing discussions with the Department of Conservation and Te Arawhiti. As we refine the structure of our Post-Settlement Governance Entity (PSGE), our goal remains to keep Waikaremoana hapū and marae at the centre of decision-making. Commercially, we're progressing with appraisals of key sites and gearing up for the Patunamu Forest AGM in October. Finally, as part of the settlement, we are reviewing the historical account and the Crown's apology. Please keep an eye out for upcoming hui and consultation wānanga so we can continue to shape our collective future together.

## This issue

Relationship Agreements  
PAGE 02

Conservation Reserves  
PAGE 02

Conservation Reserves  
PAGE 04

Post Settlement  
Governance Entity  
PAGE 05

Commercial Redress and  
Historical Account  
PAGE 06

Registration  
PAGE 07

Staying Connected  
PAGE 08



## Cultural Redress - Relationship Agreements.

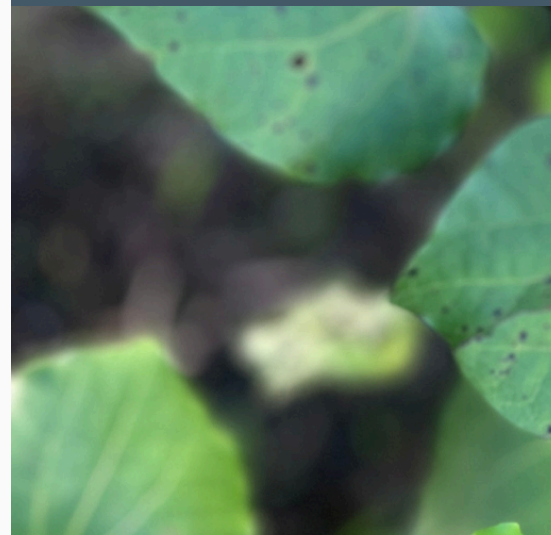
We have recently been working with several ministries to determine whether they align with our vision for a thriving Waikaremoana. While some still needed to meet our expectations, we were happy to find ministries genuinely eager to support our interests. The next important step is to draft relationship agreements as we move forward.

Below is some information about the ministries we are entering into a relationship agreement with and the services they provide.

Mātauranga Taonga (Ministry for Culture and Heritage) is dedicated to undertaking initiatives to preserve, safeguard, and nurture taonga and heritage within the framework of NRMW. They are also committed to enabling the care and access to taonga held by NRMW or the culture and heritage agencies.

We informed the Te Tūapapa Kura Kāinga (Ministry of Housing and Urban Development (HUD) that we want to collaborate with them on progressive home ownership and a master planning exercise for housing development. They indicated they are willing to connect us with contacts to advance their housing and urban development goals.

**“We want to collaborate with them on progressive home ownership and a master planning exercise for housing development.”**





## Cultural Redress - Relationship Agreements (continued)

Toitū Te Whenua (Land Information New Zealand) offers specialised services that help connect descendants with their whakapapa and land. Additionally, they provide freshwater geographical information systems (GIS) to monitor the health and flow of our awa in our catchment area. These services are particularly relevant to Waikaremoana and the aspirations you expressed in 2021.

Hikina Whakatutuki (Ministry of Business Innovation and Employment) has the potential to support Waikaremoana in its vision. Through MBIE, we will have access to specialist services such as building and energy, tourism and business, and employment, to name a few. MBIE will nominate a pivotal lead to work with the post-settlement governance entity to assist with their aspirations.



## Cultural Redress - Conservation Properties

In the last few months, we have engaged in multiple negotiation sessions with the Department of Conservation. Through these discussions, we have identified properties that will be transferred to the Te Urewera Board. Te Arawhiti will be responsible for further discussions with the Te Urewera Board, which has indicated its support for our request.

Our main focus has been on returning lands through the settlement process that rightfully belong to us based on our whakapapa. This includes the removal of rates and DoC restrictions.

**“Our main focus has been on returning lands through the settlement process that rightfully belong to us based on our whakapapa.”**





## Governance - Post Settlement Governance Entity

Waikaremoana moves to the beat of its own drum — we want to do something a bit different from other Treaty settlements. We're not just relying on the Crown's systems to tick boxes and close the settlement process.

To date, the PSGE structure was informed in consultation with Waikaremoana haukāinga. A common thread of those discussions was the importance of a unified whare. The PSGE must work alongside the hapū and the marae. It cannot be a standalone entity that sits apart from the people.

Another strong theme we heard from the haukāinga was accountability and security. It's important to have community confidence in the PSGE, and it's crucial that the aspirations we've identified for Waikaremoana are not lost in the process.

Our focus, and the idea that drives this structure, is Waikaremoana as a collective. We want to avoid the PSGE being siloed and disconnected from the community. And we want the decision-making mana to rest with Waikaremoana hapū.

Our legal counsel is Jamie Ferguson. Jamie has extensive knowledge and experience in treaty settlements and is committed to building the PSGE that we want.

The next steps include further discussions with the uri, hapū, Waikaremoana Tribal Authority, and our legal counsel. Meanwhile, our kaumatua will meet to decide on a name for the entity.



## Commercial Redress

Camp Kaitawa and the former Tūai School will be appraised by our valuer and the crown valuer. Together they will determine a fair purchase price for the properties.

The Ministry of Education has a separate process for valuing Waikaremoana Kura whenua and will inform us about it.

Patunamu Forest's AGM is coming up in October, which we will attend. It is always good to attend to understand how the company is performing, particularly in the current climate of legislative changes. We need to know what we will become responsible for.

## Historical Account

A review is underway on the first draft of the historical account and background section. Additionally, historian Bruce Stirling is examining the crown's acknowledgements for the Crown's forthcoming apology to Waikaremoana.

**“It is always good to understand how a company is performing. Because we need to know what we will be responsible for.”**





## Registrations

We are updating the registration form. Both online and paper versions will be available. Previously registered individuals will need to fill out this new form.

Information will be posted on our Facebook page and will be emailed to those who are currently registered with us.

Please keep your whānau informed of these changes, particularly those who don't have access to emails and do not use Facebook.

## Engagement and Consultation

The communications are being updated. We want to check in with you to see how you feel about the negotiation process because your support is crucial for the work we have done so far.

We will be organising some wananga, potentially starting in October and continuing through November.

In addition to the wananga, we will also have webinar information sessions to connect with our whanau who are unable to attend the wananga.

Don't worry; we will give you advance notice to allow time to organise your travel plans.

**“We want to check in with you to see how you feel about the negotiation process because your support is crucial for the work we have done so far.”**



# Connect with us online, or come and see us at the office

Ngāti Ruapani mai Waikaremoana Facebook  
[www.nrmw.co.nz](http://www.nrmw.co.nz)  
[admin@nrmw.co.nz](mailto:admin@nrmw.co.nz)

Office hours Monday to Thursday 8.00 am  
to  
4.00 pm at Whakamarino Lodge.

- **Governance Hui, November  
2024 (date to be confirmed)**

THE DOOR IS  
FOREVER OPEN, AND  
THE TEA IS ALWAYS  
READY!  
OUR GOAL IS TO  
MAKE SURE THAT  
EVERYONE IS  
INCLUDED IN THE  
SETTLEMENT  
JOURNEY, NO  
MATTER WHERE YOU  
RESIDE.

